

ZicPad Universal

User manual



A close-up photograph of a person's hand adjusting a fader on a professional audio mixing console. The background is a blurred recording studio with various pieces of equipment and lights.

**Ever spent time
looking for that
project ?**

**Ever dreamed of
being able to sort
and classify your
music ...**

**...pinpoint the draft ideas, the genius
creations, the projects for special
customers, the electro/hip-hop/
classical styles, ... ?**

**ZicPad allows you to do that, and
more !**



Ableton Live™

Windows
10 - 8 - 7 - Vista

FL Studio®

macOS
Catalina - Mojave
High Sierra - Sierra

Studio One®

Cubase

...and more

Table of content

Installation	7
Setup	7
Buttons	7
Menu	7
File menu	7
Project menu	7
Menu	7
Edit menu	8
Help menu	8
Delete	8
Parameters	10
Standard columns	10
Custom columns	10
Folders to scan	10
Files to scan	11
Default	11
AutoLaunch	11
Start with Windows	11
Main grid	12
Group Assign	14
Group Assign : deeper	15
Power Assign	16
Data storage	18
Registration	18
Manual registration	18
Copyright	18

Installation

You install ZicPad with the setup file provided as a download from www.cruxial.ch

There are two installers : one for Windows (Windows 10, Windows 8, 7 and Vista), and one for macOS (Catalina, Mojave, High Sierra, Sierra and down to macOS 10.8.3). Your system may warn you because ZicPad is from an 'unknown developer'. Please check the 'Security issues' link for the Windows and macOS version at www.cruxial.ch/Download.html

Setup

ZicPad will try to automatically locate your DAW project directory at the first run. If it doesn't find any, it will ask you to select a folder to scan. You can then go to Edit | Parameters, 'Folders to scan' and 'Files to scan' tabs to select where and what to scan for (see 'Parameters', next pages).

After each startup or refresh, ZicPad will scan those folders (with their sub-tree), and it will capture every new projects it finds. They will then be displayed in the ZicPad main grid. You can force a scan by using the 'refresh' function.

Buttons

Here are the buttons usage :

Button	Description
Launch	Opens the currently selected project in your DAW
Rename	Modifies the name of the currently selected project
Refresh	Makes a new scan of your folders / files
Save	Saves the grid's content
Cancel	Quits without saving the modifications done in the grid
Close	Save the grid and quits

Menu

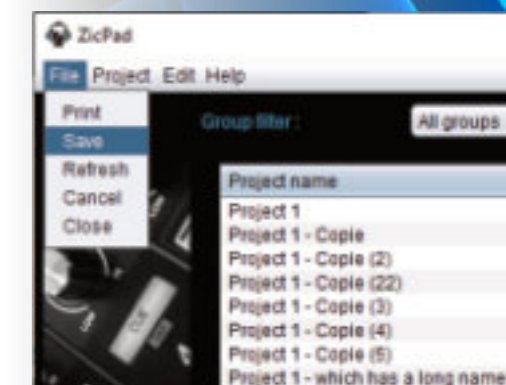
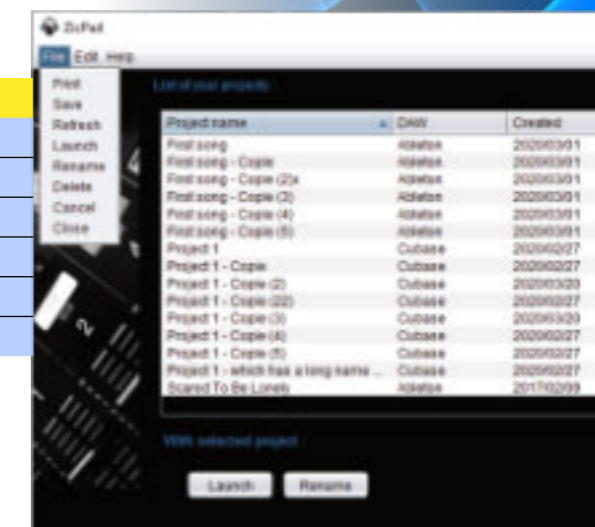
Here are the menu items usage :

File menu

File Menu	Description
Print	Prints the actual grid to your printer
Save	Saves the grid (i.e. the descriptions, status and notes)
Refresh	Makes a new scan of your folders / files
Cancel	Quits without saving the modifications done in the grid
Close	Save the grid and quits

Project menu

File Menu	Description
Launch	Opens the currently selected project in your DAW
Rename	Modifies the name of the currently selected project
Delete	Deletes the currently selected project (see below)
Open folder	Allows you to see the files inside the project's folder
Exclude folder	Insert the project's folder in the folders exclusion list

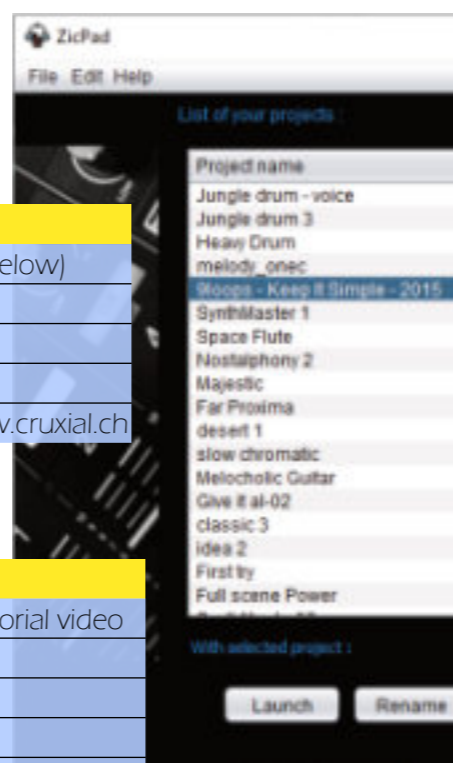


Edit menu

Item	Description
Parameters	Modifies the grid columns to displayed (see Parameters below)
Erase Groups	Sets all Group column values to "-" (not selected)
Group Assign	Powerful tool to classify your projects (see next pages)
Power Assign	Same as Group assign, but with more freedom
Registration	Use this entry once you have bought your license at www.cruxial.ch

Help menu

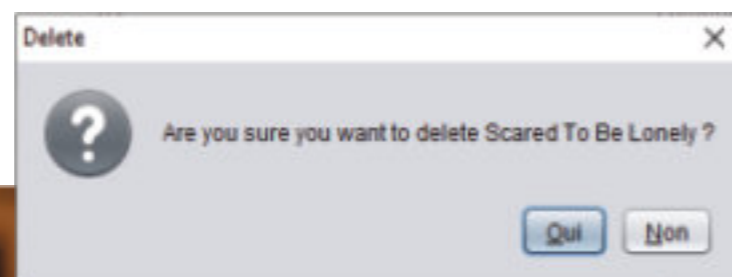
Item	Description
Tutorial	Launches your browser to our Youtube channel, with tutorial video
User manual	Checks if a new version is available on www.cruxial.ch
Check Update	Display this manual (in pdf form)
Restore splash	Restores the splash screen, in case you dismissed it
About	Displays actual ZicPad version



Delete

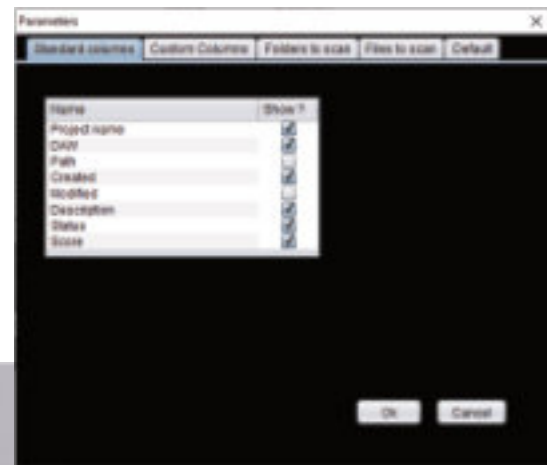
The 'delete' option (from the File menu) just deletes the project file, and only that file (along with the ZicPad xml file which stores the project description, status, grade). It doesn't remove the folder and any media file linked with the project (.wav, .mid, .mp3, ...).

A confirmation dialog ensures you know what you are doing...



Parameters

The parameters dialog (from menu item Edit | Parameters) has five tabs ;

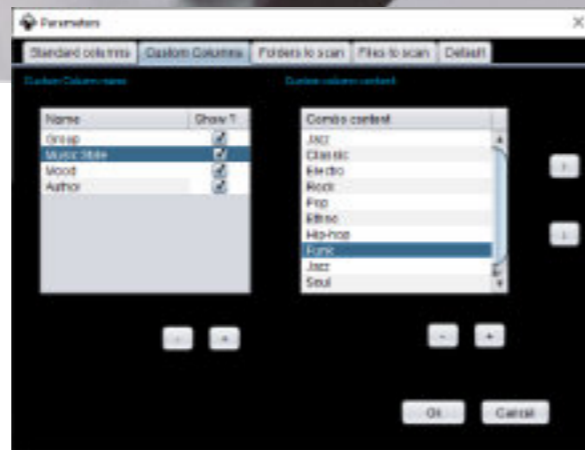


Standard columns

It allows you to select which columns (among the 'standard ones') you want to display in the main grid. In the example below, we chose to remove the 'Path' and the 'Modified' columns. That selection (along with all the other tabs of 'parameters') is stored for your next sessions of ZicPad when you 'Save' or 'Close' the main grid.

Custom columns

It allows you to create your own columns. They are defined by a name (which must be unique), and its own 'combo-box' (which mean a set a values that the column may contain). In the example here (picture at the right), the column 'Music Style' may contain the elements 'Jazz' or 'Classic' or 'Electro' and so on. You can then add or remove any element, and move the content items up or down in the list.

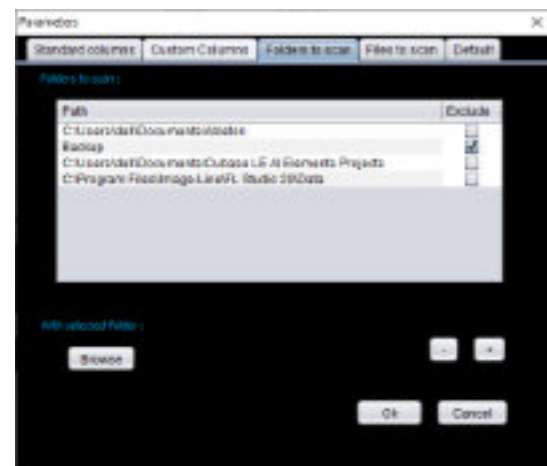


Be careful that if you remove a custom column, you may also lose the information stored for that column on all your projects ! Nevertheless, you can just remove the check in the 'Show?' check-box. That column will then not be displayed anymore, but the information will still be kept for later use.

Folders to scan

You specify here which folders (and their subtree) are to be scanned for. They can be on different drives. You can also set folders to be excluded (check the 'Exclude' box), or define just a folder name to be excluded. That way (Backup in our example), all the paths which contain 'Backup' will be excluded.

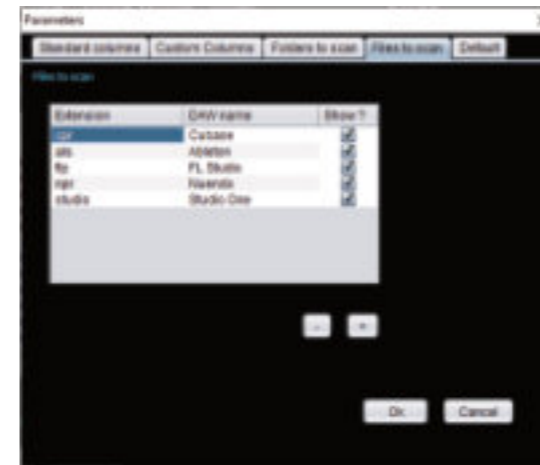
If you select a project in the main grid, and use the 'exclude folder' menu entry, then the folder of that project will be put in that list (with the 'Exclude' box checked), so that this project (and all in the same folder, and the sub-tree, will be excluded).



Files to scan

You can here specify which files extension to search for, and give a name for that file family. This means you can search for Cubase projects (cpr), Ableton Live Sets (als), FL Studio (flp), Studio One (studio) and add any other DAW/extension you like !

The only restriction is that some DAW do not allow to launch their project by 'double-clicking' on their project files (like Pro-Tools for instance), which will void the 'Launch' function of ZicPad. But all the other functions will work.



Default

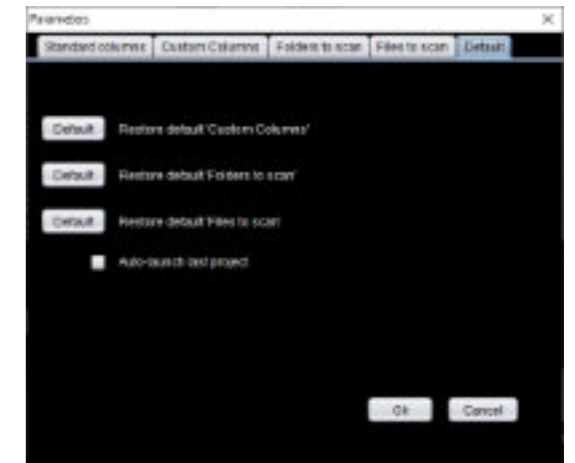
You can reset the different tabs to their default values. With the custom columns, the previous values are not removed, and the default values are added. That is because, as stated in the 'Custom columns' chapter, when removing a custom column, the data associated with it will also be lost.

AutoLaunch

If checked, the next 'Launch' will be stored, and replayed when ZicPad is started the next time you use it. Then, instead of first starting your DAW, and then launch ZicPad, do it the other way : just launch ZicPad, and it will automatically launch your preferred DAW, and load the last project you've been working on (more precisely : the last project you 'launched' from ZicPad).

Start with Windows

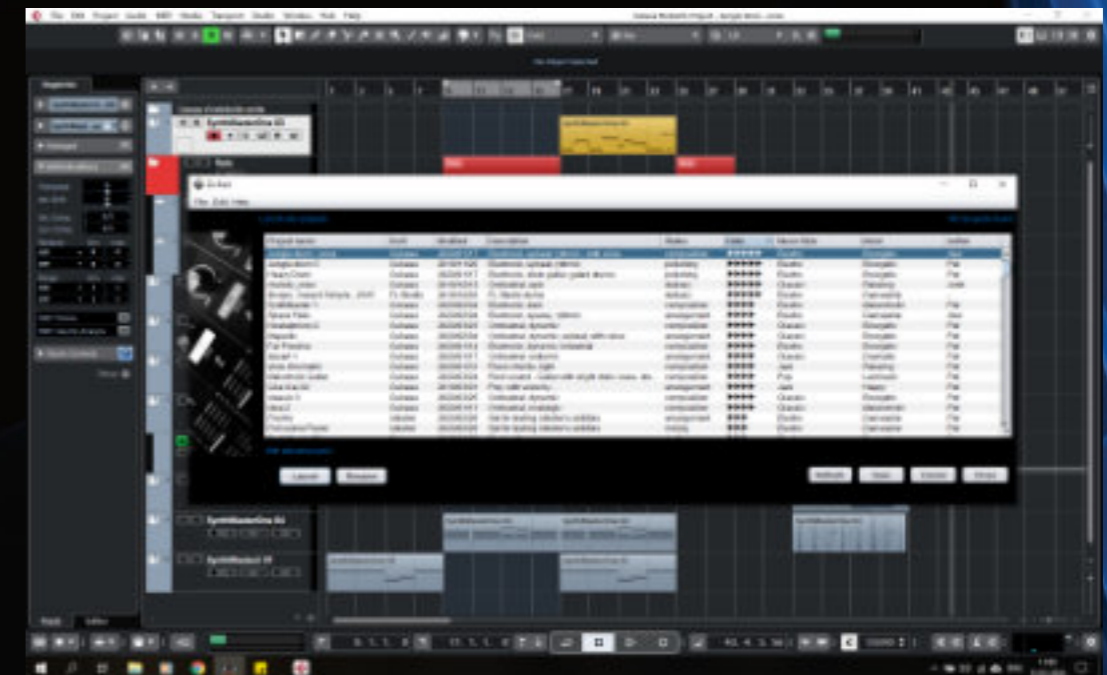
if checked, ZicPad will automatically start with your windows sessions (for windows only...)



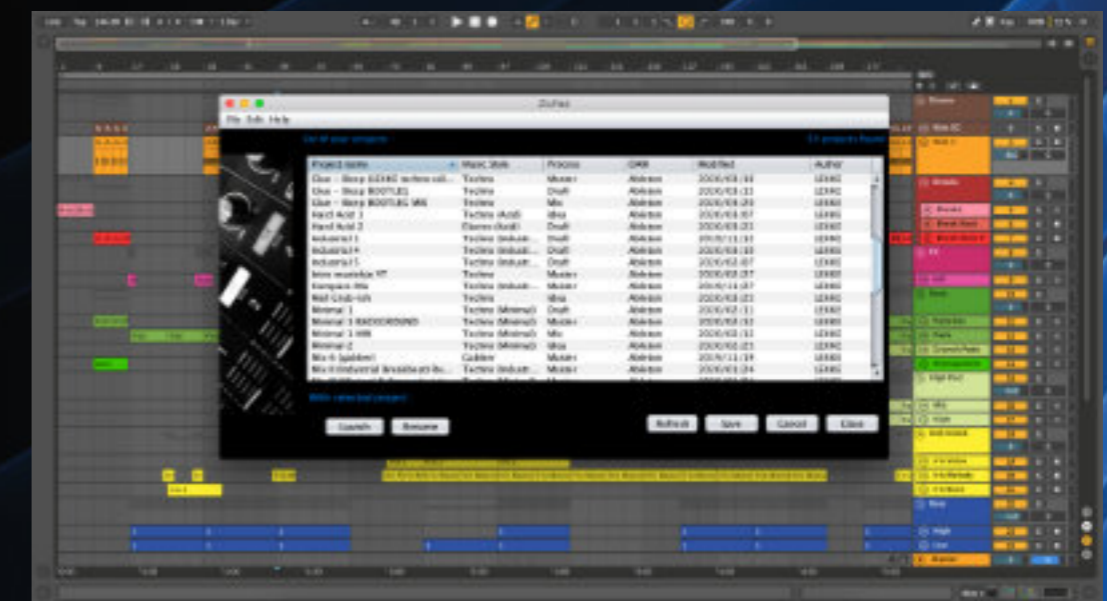
Main grid

In the main grid, you may :

- Select which column to display (see Parameters chapter above)
- Sort any column by clicking on its header (once or twice to sort from high to low, or vice-versa)
- Edit the description by double-clicking on its field
- Edit any of the columns by selecting a value from the corresponding combo-box
- Launch your project (by selecting the project and clicking launch, double-clicking on the project name, DAW, Path, Created or Modified columns, or right-click and select 'Launch')
- Rename your project or delete it.
- Open the folder containing the project (to browse the files)
- Put the project's folder in the 'folders exclusion list' (see the 'Parameters' dialog)
- Save the whole grid
- Print the whole grid



ZicPad on Windows 10, with Cubase 10



ZicPad on macOS Mojave, with Ableton Live 10

Group Assign

This is probably the most **powerful** and clever tool of ZicPad ! That tool is simple to use, but can be handled in such a way to allow quite complex usages.

Here is the 'Group Assign' window :

You choose one of your Grid's columns, enter a text you want that column to contain, and then the group you want all the rows satisfying to that condition to be set to. Easy !

Let's see an example :

1) We have the following projects :



Project name	Modified	Description	Status	Score	Group
Jungle drum - voice	2020/01/17	Electronic, upbeat, rhythmic - with voice	composition	★★★★★	
Jungle drum 3	2019/11/20	Electronic, upbeat, rhythmic	polishing	★★★★★	
Heavy Drum	2020/03/20	Electronic, dub, pulsing, gated drums	polishing	★★★★★	
Space Diving	2020/03/20	Electronic, dark	composition	★★★★	
Space Fable	2020/02/04	Electronic, spacey, rhythmic	arrangement	★★★★	
Futuristic 2	2020/02/23	Orchestral, dynamic	composition	★★★★	
Hypnotic	2020/02/04	Orchestral, dynamic, ambient, soft-voice	arrangement	★★★★	
Futuristic	2020/02/04	Electronic, dynamic, industrial	composition	★★★★	
Sketch 1	2020/01/17	Orchestral, subtle	arrangement	★★★★	
Slow chromatic	2020/02/20	Piano chords, light	composition	★★★★	
Typing on the wire	2020/02/20	Classical, acoustic & bass	draft	★★★★	
Melodic Guitar	2020/03/20	Rock sound - Guitar with slight delay, bass, drum	composition	★★★★	
One & one 2	2019/03/01	Pop, with voice fr.	arrangement	★★★★	
Classical 1	2020/02/20	Orchestral, dynamic	composition	★★★★	
Classical 2	2020/02/20	Orchestral, nostalgic	composition	★★★★	
Finger	2020/02/20	Soft for testing, industrial, subtle	composition	★★★★	
Full score Piano	2020/03/20	Soft for testing, Ateliers, subtle	arrangement	★★★★	
Synthesizer 2	2019/01/20	Electro-Spacey	draft	★★★	
Hard 1	2020/02/20	Hard rock space like	draft	★★★	
Hard 2	2020/01/17	Supersynth like bassline	draft	★★★	
Hard 3	2020/01/17	Piano chords bass line	draft	★★★	
Hard 4	2020/01/17	Pop song	draft	★★★	



As you can see, the 'Group' column is set to "-" for every project (that's the default value). You can also reset the group values to "-" by using the **"Erase Groups"** menu item. Also know that the group names can be modified/added/removed in the Edit | Parameters | Custom columns, Group custom column.


2) Let's say we want to group together all the projects which have "Electro..." in their description. We select then the menu item "Group Assign" from the "Edit" menu, and we enter this :

This means : assign to "Group 1" all the rows of the grid (i.e. all projects) in which the column "Description" contains the text "Electro".

When you click the "Set" button, you'll see a dialog box indicating that 24 items have been assigned (that is on my system), and you'll immediately see the result :



Project name	Modified	Description	Status	Score	Group
Jungle drum - voice	2020/01/17	Electronic, upbeat, rhythmic - with voice	composition	★★★★★	Group 1
Jungle drum 3	2019/11/20	Electronic, upbeat, rhythmic	polishing	★★★★★	Group 1
Heavy Drum	2020/03/20	Electronic, dub, pulsing, gated drums	polishing	★★★★★	Group 1
Space Diving	2020/03/20	Electronic, dark	composition	★★★★	Group 1
Space Fable	2020/02/04	Electronic, spacey, rhythmic	arrangement	★★★★	Group 1
Futuristic 2	2020/02/23	Orchestral, dynamic	composition	★★★★	Group 1
Hypnotic	2020/02/04	Orchestral, dynamic, ambient, soft-voice	arrangement	★★★★	Group 1
Futuristic	2020/02/04	Electronic, dynamic, industrial	composition	★★★★	Group 1
Sketch 1	2020/01/17	Orchestral, subtle	arrangement	★★★★	Group 1
Slow chromatic	2020/02/20	Piano chords, light	composition	★★★★	Group 1
Typing on the wire	2020/02/20	Classical, acoustic & bass	draft	★★★★	Group 1
Melodic Guitar	2020/03/20	Rock sound - Guitar with slight delay, bass, drum	composition	★★★★	Group 1
One & one 2	2019/03/01	Pop, with voice fr.	arrangement	★★★★	Group 1
Classical 1	2020/02/20	Orchestral, dynamic	composition	★★★★	Group 1
Classical 2	2020/02/20	Orchestral, nostalgic	composition	★★★★	Group 1
Finger	2020/02/20	Soft for testing, industrial, subtle	composition	★★★★	Group 1
Full score Piano	2020/03/20	Soft for testing, Ateliers, subtle	arrangement	★★★★	Group 1
Synthesizer 2	2019/01/20	Electro-Spacey	draft	★★★	Group 2
Hard 1	2020/02/20	Hard rock space like	draft	★★★	Group 2
Hard 2	2020/01/17	Supersynth like bassline	draft	★★★	Group 2
Hard 3	2020/01/17	Piano chords bass line	draft	★★★	Group 2
Hard 4	2020/01/17	Pop song	draft	★★★	Group 2



Project name	Modified	Description	Status	Score	Group
Jungle drum - voice	2020/01/17	Electronic, upbeat, rhythmic - with voice	composition	★★★★★	Group 1
Jungle drum 3	2019/11/20	Electronic, upbeat, rhythmic	polishing	★★★★★	Group 1
Heavy Drum	2020/03/20	Electronic, dub, pulsing, gated drums	polishing	★★★★★	Group 1
Space Diving	2020/03/20	Electronic, dark	composition	★★★★	Group 1
Space Fable	2020/02/04	Electronic, spacey, rhythmic	arrangement	★★★★	Group 1
Futuristic 2	2020/02/23	Orchestral, dynamic, industrial	composition	★★★★	Group 1
Hypnotic	2020/02/04	Orchestral, dynamic, ambient, soft-voice	arrangement	★★★★	Group 1
Futuristic	2020/02/04	Electronic, dynamic, industrial	composition	★★★★	Group 1
Sketch 1	2020/01/17	Orchestral, subtle	arrangement	★★★★	Group 1
Slow chromatic	2020/02/20	Piano chords, light	composition	★★★★	Group 1
Typing on the wire	2020/02/20	Classical, acoustic & bass	draft	★★★★	Group 1
Melodic Guitar	2020/03/20	Rock sound - Guitar with slight delay, bass, drum	composition	★★★★	Group 1
One & one 2	2019/03/01	Pop, with voice fr.	arrangement	★★★★	Group 1
Classical 1	2020/02/20	Orchestral, dynamic	composition	★★★★	Group 1
Classical 2	2020/02/20	Orchestral, nostalgic	composition	★★★★	Group 1
Finger	2020/02/20	Soft for testing, industrial, subtle	composition	★★★★	Group 1
Full score Piano	2020/03/20	Soft for testing, Ateliers, subtle	arrangement	★★★★	Group 1
Synthesizer 2	2019/01/20	Electro-Spacey	draft	★★★	Group 2
Hard 1	2020/02/20	Hard rock space like	draft	★★★	Group 2
Hard 2	2020/01/17	Supersynth like bassline	draft	★★★	Group 2
Hard 3	2020/01/17	Piano chords bass line	draft	★★★	Group 2
Hard 4	2020/01/17	Pop song	draft	★★★	Group 2

3) Then, we can simply close the "Group Assign" window, and choose "Group 1" in the combo-box in the upper left corner (Group filter). Only the projects assigned to "Group 1" will be displayed, and the projects counter (in the upper right corner) will display the number of projects in the actual group versus the total number of projects (here 24 out of 96).

Group Assign : deeper

But we can go deeper ! Let's say we want to further refine our group, and that among that group, we want to make a more subtle definition. For instance, we want to put in another group (Group 3), the projects whose description contains the word «Electro», but also which are in the «draft» status.

We can do it that way :

- Choose the column "Status", with "draft" as value, and "Group 2" as the target group, but :
- Check the "Apply only to the selected rows", which will pop up the "Base rows" combo-box. Select then "Group 1" as the Base, i.e. you want that assignment to be made only among the rows/projects who are already in the "Group 1" group.

The result is then as follow. And you can go deeper and deeper !



Project name	Modified	Description	Status	Score	Group
Jungle drum - voice	2020/01/17	Electronic, upbeat, rhythmic - with voice	composition	★★★★★	Group 1
Jungle drum 3	2019/11/20	Electronic, upbeat, rhythmic	polishing	★★★★★	Group 1
Heavy Drum	2020/03/20	Electronic, dub, pulsing, gated drums	polishing	★★★★★	Group 1
Space Diving	2020/03/20	Electronic, dark	composition	★★★★	Group 1
Space Fable	2020/02/04	Electronic, spacey, rhythmic	arrangement	★★★★	Group 1
Futuristic 2	2020/02/23	Orchestral, dynamic, industrial	composition	★★★★	Group 1
Hypnotic	2020/02/04	Orchestral, dynamic, ambient, soft-voice	arrangement	★★★★	Group 1
Futuristic	2020/02/04	Electronic, dynamic, industrial	composition	★★★★	Group 1
Sketch 1	2020/01/17	Orchestral, subtle	arrangement	★★★★	Group 1
Slow chromatic	2020/02/20	Piano chords, light	composition	★★★★	Group 1
Typing on the wire	2020/02/20	Classical, acoustic & bass	draft	★★★★	Group 1
Melodic Guitar	2020/03/20	Rock sound - Guitar with slight delay, bass, drum	composition	★★★★	Group 1
One & one 2	2019/03/01	Pop, with voice fr.	arrangement	★★★★	Group 1
Classical 1	2020/02/20	Orchestral, dynamic	composition	★★★★	Group 1
Classical 2	2020/02/20	Orchestral, nostalgic	composition	★★★★	Group 1
Finger	2020/02/20	Soft for testing, industrial, subtle	composition	★★★★	Group 1
Full score Piano	2020/03/20	Soft for testing, Ateliers, subtle	arrangement	★★★★	Group 1
Synthesizer 2	2019/01/20	Electro-Spacey	draft	★★★	Group 2
Hard 1	2020/02/20	Hard rock space like	draft	★★★	Group 2
Hard 2	2020/01/17	Supersynth like bassline	draft	★★★	Group 2
Hard 3	2020/01/17	Piano chords bass line	draft	★★★	Group 2
Hard 4	2020/01/17	Pop song	draft	★★★	Group 2

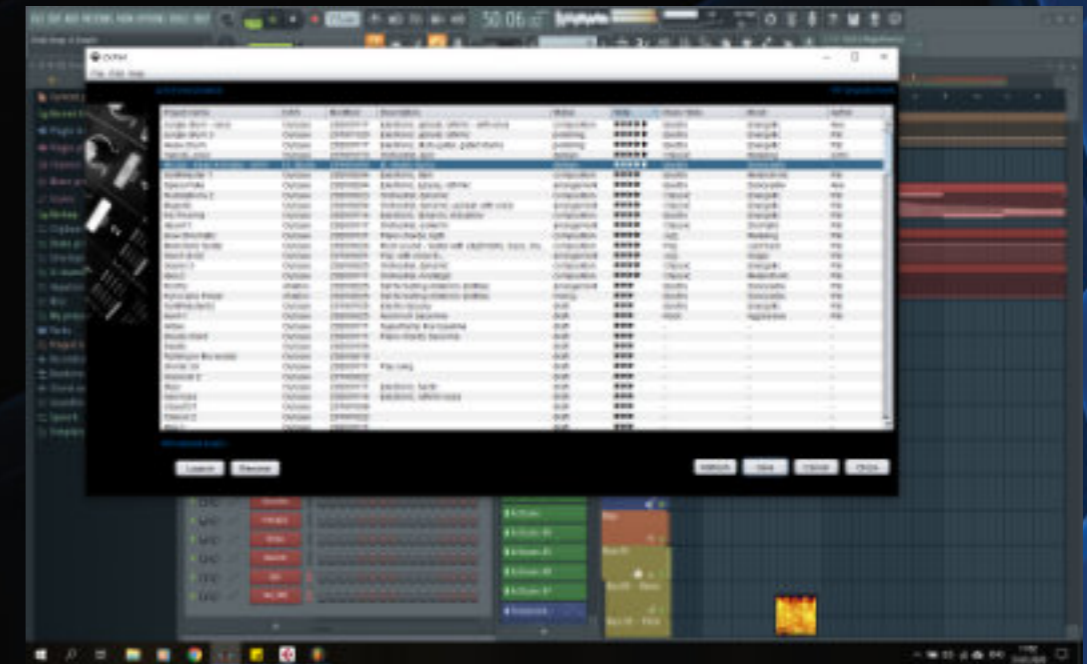
Power Assign

Power Assign is similar to Group Assign, but with a greater freedom (and a bit of complexity too).

It allows you to set Any column (not only the 'Group' column) to the desired value (any text), based on the condition that a reference column contains a reference text.

As with the Group Assign, you can define that this operations only works on a predefined set of your projects.

You do that by checking the box 'Apply only if this condition is met', and then defined which column should contain which text.



ZicPad on Windows 10, with FL Studio 20



Data storage

The data you enter, for any project, is saved in a convenient XML file (with the project name, added with the XML extension). It is saved in the same folder as your project file. This will not interfere with your DAW in any way, and has the advantage of allowing to move your project folder, or rename them the way you want : you will not lose the data you have associated with your project, in ZicPad. Those files take a ridiculously low room on your hard disk.

Registration

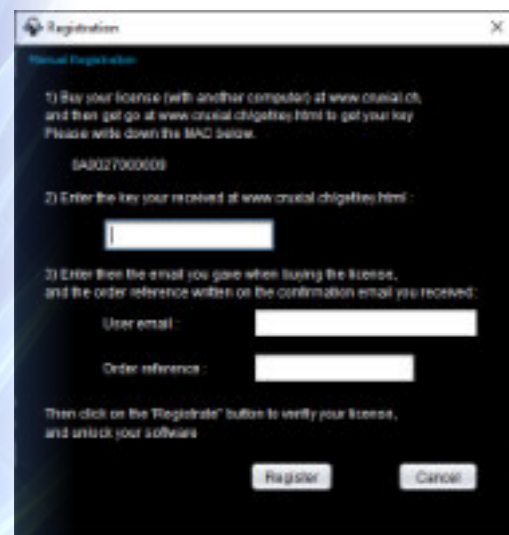
ZicPad is distributed as a 30 days trial software. During that time, you have full access to all the ZicPad functionalities, except the printing function.

To buy and register your software, do as follow :

1- Go to www.cruxial.ch/ZicPad, and buy a license

2- Start ZicPad on your computer, go to Edit | Registration. Fill the fields : user email & order reference (that is, the email you gave when buying the license, and the order reference you received on that email after you bought the license).

Click 'Internet registration' : that's it !



Manual registration

If you don't want to access Internet (or don't have Internet) on that computer, do as follow :

1- Go to www.cruxial.ch/ZicPad, and buy a license (through another computer or smart phone)

2- Start ZicPad on your computer, go to Edit | Registration, click on 'Manual registration', and write down the 'MAC address' displayed.

3- Get your unlock key at www.cruxial.ch/getkey.html. There, you'll be asked for your MAC address. Write down the key you'll received, and enter it in the manual registration dialog. Click 'Manual unlock' : that's it !

Copyright

ZicPad has been developed by Cruxial.ch
Send your questions, remarks to info@cruxial.ch

Cubase is a trademark of Steinberg GMBH
Ableton Live is a trademark of Ableton
FL Studio Registered United States Patent and Trademark Office
Studio One is a trademark of PreSonus Audio Electronics, Inc

ZicPad is not affiliated with Cubase nor Ableton nor FL Studio nor PreSonus

Icon made by Surang from www.flaticon.com

Images from Pixabay (Lorri Lang, Alec White, Pexels, Free-Photos, theglassdesk)

This manual has been written for ZicPad v3.4

